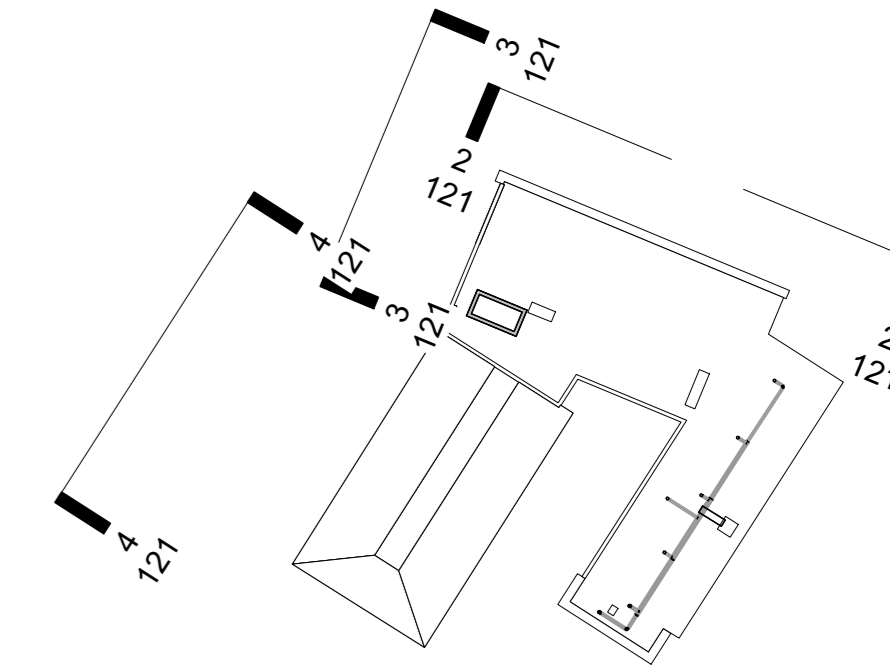


This drawing is the copyright of Axiom Architects. It is for planning application purposes only and may not be reproduced in whole or in part without permission. Drawings lodged for planning approval may be reproduced by the Planning Authority in accordance with the 'Copyright (Material Open to Public Inspection) (Marking of Copies of Plans and Drawings) Order 1987' and must carry the relevant copyright restriction note. Scaling from this drawing should only be carried out from a print at the scale and size specified within the title block. Responsibility for ensuring correct size reproduction remains with the reader.



0 Key Plan 01

MATERIALS KEY:

- 01 Off-white through colour render
- 02 Dark grey through colour render
- 03 Brown Multi stock brick, natural mortar
- 04 White painted render panels and white painted concrete lintels
- 05 Metal cladding
- 06 Single ply membrane



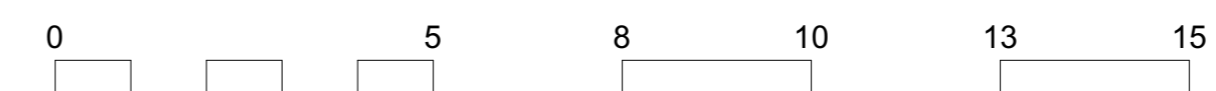
2 NORTH EAST ELEVATION  
Scale: 1:100



3 NORTH WEST ELEVATION 1  
Scale: 1:100



4 NORTH WEST ELEVATION 2  
Scale: 1:100



A	09/12/24	ISSUED FOR APPROVAL	AJ
Rev	Date	Description	By Chk

**AXIOM ARCHITECTS**  
 1 Brooklands Yard Southover High Street Lewes East Sussex BN7 1HU  
 Tel. 01273 479434 www.axiomarchitects.co.uk

Client  
**CARTER LAUREN CONSTRUCTION**

Project  
**HOLIDAY INN EXPRESS WIMBLEDON  
 COLLIERS WOOD  
 LONDON SW19 2BH**

Drawing  
**EXISTING NORTH ELEVATIONS**

Scale	Date	Drawn	Checked
1:100 @ A1	18/11/24	AJ	AB
Drawing No.	Revision		
<b>5823-P3- 121</b>	<b>A</b>		
Status	PLANNING		