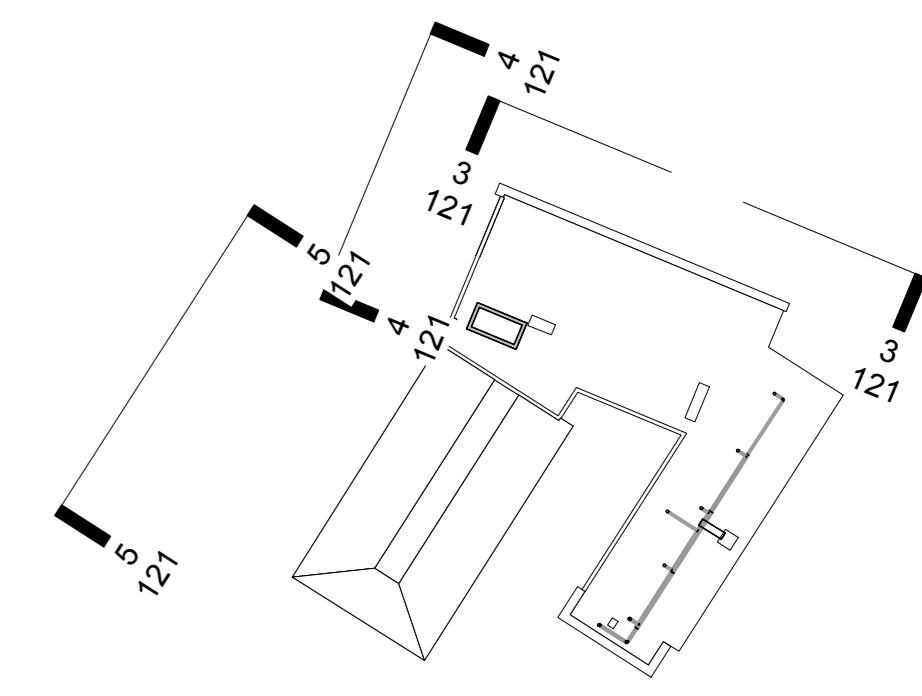
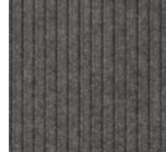








This drawing is the copyright of Axiom Architects. It is for planning application purposes only and may not be reproduced in whole or in part without permission. Drawings lodged for planning approval may be reproduced by the Planning Authority in accordance with the "Copyright (Material Open to Public Inspection) (Marking of Copies of Plans and Drawings) Order 1980" and must carry the relevant copyright restriction note. Scaling from this drawing should only be carried out from a print at the scale and size specified within the title block. Responsibility for ensuring correct size reproduction remains with the reader.



0 Key Plan 01

PROPOSED MATERIALS KEY:

	Dark grey GRC cladding to ground floor		Feature stock brick, natural mortar to side return elevation
	Patinated copper cladding to entrance portico		Aluminium feature cladding to profiles and copings
	Anodised aluminium laser cut cladding Dark Umber finish feature cladding and terrace guarding		Aluminium curtain walling Dark grey
	Dark grey Rockpanel A2 cladding principle cladding		

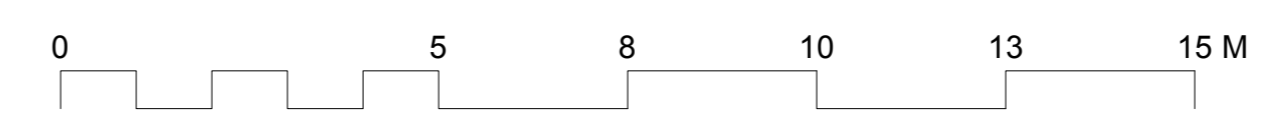
3 NORTH EAST ELEVATION
Scale: 1:100



4 NORTH WEST ELEVATION 1
Scale: 1:100



5 NORTH WEST ELEVATION 2
Scale: 1:100



Rev	Date	Description	By	Chk
C	19/12/24	ISSUED FOR PLANNING Fourth floor parapet reduced	AJ	

AXIOM ARCHITECTS
 1 Brooklands Yard Southover High Street Lewes East Sussex BN7 1HU
 Tel. 01273 479434 www.axiomarchitects.co.uk

Client
CARTER LAUREN CONSTRUCTION

Project
 HOLIDAY INN EXPRESS WIMBLEDON
 COLLIERS WOOD
 LONDON SW19 2BH

Drawing
PROPOSED NORTH ELEVATIONS

Scale	Date	Drawn	Checked
1:100 @ A1	18/11/24	AJ	AB

Drawing No. **5823-P3- 126 C**
 Status
PLANNING